

## Project Info

 January 2019

 CC5™

 # 400sqm

 Longitudinal Layer

 Shivrampally

 RVNL Hyderabad



Installation Completion Photo

After visiting the site, the work of new line is going under process and the slope near the planned alignment of new railway track is prone to erosion due to vibrational movement of train. Also the drain at the side of line is getting blocked due to soil gets directly in drain so to prevent the surface erosion of the sited slope, RVNL has decided to use concrete canvas 5mm thick immediately for fast work and long term solution.

In January 2019, the work has been started to protect the slope from erosion of soil. First of all we clear the surface from shrubs and fill the pit holes with soil and tried to even the slope. On the top of the slope a drain was digged, cut piece laid on slope one by one with overlap of 100 mm between two cut pieces, dressing was done, and then fixed it with the help of pegs. Then Clean the overlap portion from dust and dry cement and used cement based sealant (to stick overlap) then tight 1" fully threaded screw having washers on the overlap for better fixing result. Then cure it with water for one day having 2-3 hours intervals. Above project completed having 400sqm area in 25 working days with 15 to 20 labor's team. The work is completed in 20 days only including heavy site preparation.



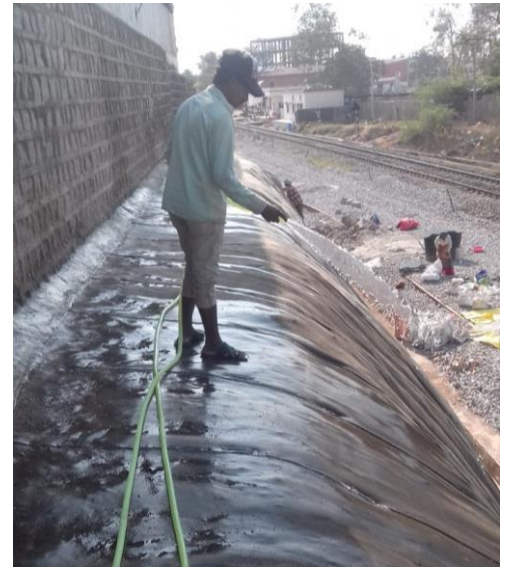
Site Before Preparation



Pegging



Screwing



Hydration



Site after Installation