

Project Info



January 2019



CC5 & CCH5



65m² & 50m²



Longitudinal Layer



SCR Yardline



South Central Railway



Yardline SCR

At the Secunderabad Yard line station; there are certain leakages on the joints between two concrete blocks. The subway below it is in use and facing water leakage through the gaps. The client want to use Concrete Canvas Hydro on the main joints and Concrete Canvas on the abutments for protecting leakages.

In January 2019, we started the work on protecting the leakages. We follow our standard installation steps. First of all we did excavation of the ballast and soil above the joints. We made the joints dust free for our installation. In next step we fill cement concrete in the gaps as the gaps were so large. After proper compaction and settling of concrete we started to lay the concrete canvas and concrete canvas hydro over it. Fixed it with silicon sealant and hilti nails and assure there will be no leakages and gaps between CC and the surface. We did the work in a week with 6-8 labours a days including site preparation time and backfilling of railway subgrade.





Excavation started



Excavation of Soil



After Cleaning of joint



Concrete filling in joints



Filling of joints with concrete



Sealant work on CC



Sealant work on CCH



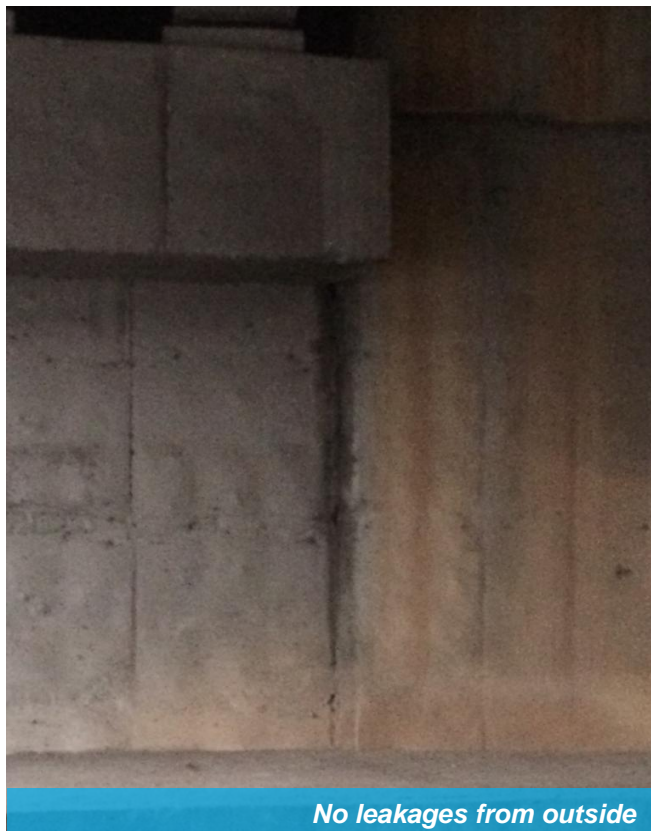
Fixing of CC with Hilti Nails



Complete installation with hilti & sealant



Extra sealant work on



No leakages from outside



No leakages from outside