

Project Info



March 2021



CC5™



379 m²



Longitudinal



Vijaywada



A.S. Infrastructures



Completed Installation

On March 2021, we have started the work covering the LHS joints from inner side to stop water leakages to the subway. In rainy season, water was percolating through the gaps, which needs to be treated. RVNL Vijaywada allotted this work for covering joints with Concrete canvas to SSPL under A.S. Infrastructures.

The installation team faced challenges like working at the height of 4m from the ground, restricted access and continuous train movements as well as vehicular movements. The silicon sealant used to stick the CC to the LHS blocks were not effective and due to continuous vibrations from rain water movement, we were required to use Hilti nails as well.

In total, 379m² of CC5™ were used to cover 3 LHS ranging from joints of 12-16m internal dimensions of blocks. The team did the first work with some difficulties in only 4 days from start to end. After which the remaining works were done faster due to labors' training. Complete Project was done in 2 weeks' time with 4 engineers and 16 labors' team.







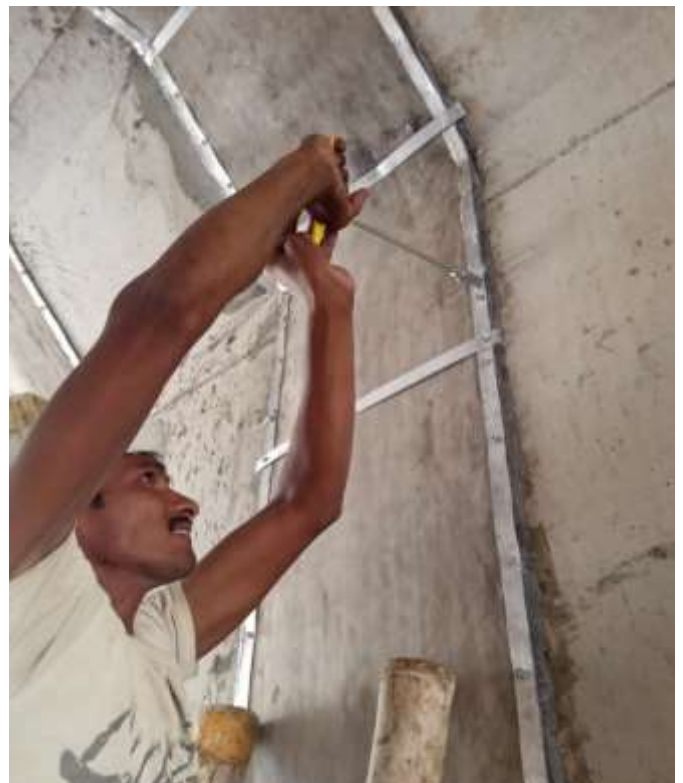
Fixing of top patch with Hilti nailing machine



Fixing of vertical patch with Hilti nailing machine



Fixing of vertical patch with Hilti nailing machine



Fixing of Anchor fasteners



Installation Completed Site



Installation Completed Site